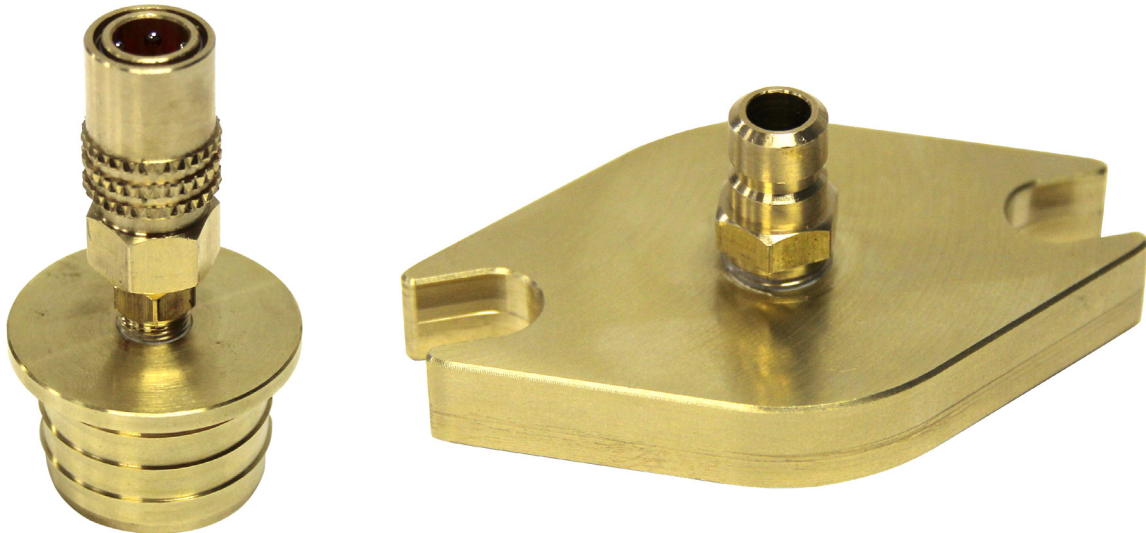




## ***International MaxxForce 2009-2013***

***Part No. 069-3651 & 069-3506***



### **CAUTION:**

Always wear gloves and safety glasses when performing this service

### **EGR System Consists of:**

- Cold side EGR valve (after EGR cooler) controls exhaust gases for proper emissions control of No<sub>x</sub> gases
- EGR cooler (controls temperature of exhaust gases to the air intake to the engine)
- EGR cooler bypass valve (controls exhaust flow temperature to the air intake from the exhaust through the EGR cooler) – Model year 2008 - Present
- EGR temperature sensor (measures EGR cooler exhaust temperature and efficiency)

**These items are critical for proper emissions management control and must be cleaned on a regular basis for optimum efficiency.**

### **First steps before any service can be performed:**

1. Add DieselTune™ Max Strength Fuel Injector Cleaner (400-3012) to the vehicle's fuel tank.
2. Remove the plastic engine cover.
3. If the engine is hot, the EGR cooler must be cooled

## Tools and Adapters Required:

---



069-3651



069-3506



069-3399



500-0170

**ISO 9001**  
**CERTIFIED**  
ZIM16-01743